

Jharkhand Power System Improvement Project (JPSIP)

Jharkhand Urja Sancharan Nigam Limited (JUSNL)

Govt. of Jharkhand



Tribal People Development Plan (Draft Report)

Grid Substation (GSS), Chowka

Zone -III Jamshedpur Jharkhand

-PREPARED BY-

Medhaj Techno Concept Pvt. Ltd.

PMC, Zone-III, Jamshedpur Jharkhand

DOCUMENTATION CONTROL:

Project Name	Jharkhand Power System Improvement Project Under World Bank Funded Scheme.
Report for	World Bank Project
Report No	01
Revision	-
For	Approval
Report Title	Tribal People Development Plan (Draft)

PREPARATION, REVIEW AND AUTHORIZATION

Rev.	Date	Prepared by	Reviewed & Checked By	Approved & issued by
1	11.07.2024	Mr. Satyanarayan Dutta	Mr. Samir kumar (Social Safeguard Expert) Mr. GP Singh Environment Expert- Jamshedpur	Mr. Srinivas Parthi Project Director- MTCPL, Ranchi

ABBREVIATIONS

AP	: Affected Person
BPL	: Below Poverty Line
CNT	: Chhota Nagpur Tenancy Act, 1908
DC	: District Collector
DPR	: Detail Project Report
EA	: Executing Agency
EM	: Entitlement Matrix
ESMF	: Environment Social Management Framework
IR	: Involuntary Resettlement
JhLARR	: Jharkhand Right to Fair Compensation and Transparency in Land Acquisition, Rehabilitation and Resettlement Rules, 2015
JPSIP	: Jharkhand Power System Improvement Project
JUSNL	: Jharkhand Urja Sancharan Nigam Limited
kV	: Kilo Volt
LARRA	: The Right to Fair Compensation and Transparency in Land Acquisition, Rehabilitation and Resettlement Act, 2013
PTG	: Primitive Tribal Groups
RF	: Resettlement Framework
RP	: Resettlement Plan
SIA	: Social Impact Assessment
TP	: Tribal People
SPT	: Santhal Pargana Tenancy Act, 1949
TPDP	: Tribal People Development Plan
TDPF	: Tribal Development Planning Framework
TPPIA	: Tribal People Plan Implementation Agency
MADA	: Modified Area Development Approach
GRC	: Grievance Redressal Cell
DGM	: Deputy General Manager
GM	: General Manager
IHHL	: Individual Household Latrine
SBMG	: Swachh Bharat Mission Gramin
ODF	: Open Defecation Free
SLWM	: Solid Liquid Waste Management
JJM	: Jal Jeevan Mission

Table of Contents

SN	Particulars	Page Number
0	Executive Summary	5
1	Introduction	11
2	Objective	12
3	Methodology	13
4	Legal and Policy Framework	18
5	World Bank Operational Policy	24
6	Socio-Economic Profile	24
7	Impacts due to project implementation	32
8	Need Assessment	34
9	Mitigation Measures	36
10	Institution and Implementation Arrangement	37
11	TPDP Implementation Strategy	38
12	Monitoring and Evaluation	40
13	Grievance Redressal Mechanism	41
14	Budgeting and Costing	42
15	Annexure -01 (Community Meeting MOM and List of Identified Location for Installation Solar Light at Ghatdulmi Village.)	43
16	Annexure -02 (Community Meeting MOM and List of Identified Location for Installation Solar Light at Jurgu Village.)	46

Executive Summary

The **Jharkhand Power System Improvement Project (JPSIP)** is being implemented by the **Jharkhand Urja Sancharan Nigam Limited (JUSNL)**, Govt. of Jharkhand with technical & financial assistance of **World Bank (WB)** for the transmission infrastructures development/upgradation, which includes: (a) Creation of 25 new 132 kV Grid substations, and (b) Development of associated 132 KV transmission lines of around 1800 kms. The program aim is to achieve 24x7 reliable powers for all the households in Jharkhand.

The Project JPSIP is World Bank funded project which follows the World Banks Environment and Social safeguards operational policies, which includes the Tribal people Development Plan (TPDP) as per WB, **OP/BP-4.10**. The Jharkhand Tribal Development Society, under Department of Welfare, Government of Jharkhand and Jharkhand Tribal Welfare Department consider village with more than 50 percent ST population as 'Tribal Village'. In alignment with the tribal population threshold considered by the government, TPPs are being prepared for a village which has more than 50 percent ST population as per Census 2011 in the project footprint area.

This Tribal People Development Plan (TPDP) covers impacts in the project affected locations, the Grid Substation (GSS) Chowka and its surrounding area approximately 2 km in Chandil Block in District Saraikela Kharsawan of Jharkhand State. There are two tribal, Ghatdulmi and Jurgu villages, falling within 2 km study area. The total tribal population in these villages are more than 50%. The TPDP has been prepared to manage and mitigate any impact on the tribal people due to project interventions. This document sets out policy, framework and implementation mechanism to address such impacts according to World Bank Operational Policy on Indigenous People (OP 4.10).

Legal and Policy Framework

The Scheduled Tribes (STs) are defined under the Article 366 (25) of the Indian Constitution and scheduled as STs by the President of India through public gazette notification as accordance with the Article 342 of the Indian constitution. The Govt of India also framed certain laws & policies to safeguards the tribal and Primitive Vulnerable Tribal Groups (PVTGs) for the projects/subprojects, transmission lines & tower passing through scheduled area such as 5th Schedule of the India Constitution (Article-244) and Panchayat (Extension to Scheduled Area) Act, 1996, The Scheduled Tribes and Other Traditional Forest Dwellers

(Recognition of Forest Rights) Act, 2006, if project/subprojects passing through forest Areas. Similarly, Chhotanagpur Tenancy Act (CNT Act), 1908 and Santhal Pargana Tenancy Act (SPT Act), 1949 for transfer of any tribal land to non-tribal land or land to be used for public purpose. The Scheduled Caste and Scheduled Tribes (Prevention of Atrocities) Rules, 1995 to control any potential atrocities being committed by staff / labour force of contractor during construction. Also considering the 7 clusters under the Modified Area Development Approach (MADA) in the state of Jharkhand during selection of site for the project components.

The grid substation (GSS) is located in tribal areas and Vth scheduled area which includes surrounding Villages Ghatdulmi and Jurgu . These tribal villages are concerned to tribal communities Munda. The World Bank Operational Policy 4.10 for Indigenous People is applicable to the project.

Socio-Economic Profile

The state of Jharkhand has a considerable tribal population. The Scheduled Tribe (ST) population of Jharkhand State is 8,645,042 constituting 26.2 per cent of the total population (3,29,88134) of the State as per 2011 census. Jharkhand is home to 32 tribal communities. Among the thirty-two (32) Notified Scheduled Tribes, the Santhals are the most populous tribe constituting 34% of the total ST population of the State. There are also eight primitive tribal groups – classified as the Particularly Vulnerable Tribal Group PVTG (earlier known as PTG-Primitive Tribal Groups).

The socio-economic profile of the Tribal People in project area is based on analysis of as per the Census 2011 data and Focussed Group discussion (FGD) with community as follows:

Findings:

- The GSS Chowka located at Village Ghatdulmi and the villages Ghatdulmi and Jurgu are located within the 2 km periphery of the GSS.
- **Demographic overview:** Total population of the tribal villages located within the study area are 185 Houses in 944 Population. The household size of ST population within the study area varies from 4 to 6 people with average household size of the state is 4.67 people. (Source: Community Consultation)
- **Literacy profile:** The rate of literacy among the ST population are 85.38 percent within the study area. These villages male Literacy rate are higher and female literacy rate are lower than the state level male and female

literacy rate. The male and female literacy rate was 81.02 percent and 40.342 percent respectively whereas at state level male and female literacy rate is 76.84 percent and 55.42 percent respectively.

- **Employment status:** The employment status of the study area indicates that 41.66 percent are main worker and 58.33 percent non-workers. The Percentage of main worker is lower in villages located within the study area of GSS Ghatdulmi .(Source: Community Consultation)
- **Livelihood:** Agriculture is the primary livelihood for majority of the tribal population in the state, as well as within the study area. Labour work next to agriculture is the second livelihood option within the study area. Although state sponsored livelihood project is also being covered under the rural development department as a Jharkhand State Livelihood Promotion Society (JSLPS) for high value agriculture, livestock, fisheries and market linkage through the farmer producer organization (FPO).
- **Drinking water source:** The village of the study area are being covered under the national flagship program Jal Jeevan Mission (JJM) for the safe drinking water to the community. The major source of the drinking water is community based solar mounted piped water supply scheme and hand pumps, tube wells are also existing which was covered the under the previous drinking water supply programme. Although there are some operational issues related to operation & maintenance of piped water supply scheme by the community which needs to be addressed in Tribal People Development Plan (TPDP)
- **Sanitation** – The village of the study area had declared 100 percent open defecation free by accessing individual household leach pit toilet under the National Flagship Programme, Swachh Bharat Mission-Gramin (SBMG). Although there are some defunct toilets are existing and being not utilized by the beneficiaries, so it needs to be addressed in Tribal People Development Plan (TPDP).
- **Accessibility to Social Security Schemes:** There are lots of National as well as State Flagship Programme/Schemes for the social security is existing in the study area. Such as, free rice scheme, old age pension for all, Ration Card, Ayushman Yojana, Kisan Credit Card, Pradhanmantri Awas Yojana etc.

Impacts due to Project Implementation

It is assessed that project implementation will cause both positive and adverse impacts to the tribal population. The positive impacts assessed are improved

and reliable power supply to domestic and social entrepreneurs, increased social inclusion, improved quality of life due to electricity supply and positive impact for women and children for more productive use of the electricity.

The Chowka GSS is located at Village Ghatdulmi Plot No - 209, 210, 211, 212 and 213 in District Saraikela Kharsawan Jharkhand. The GSS has a total Land area of 7.43 acre which includes 7.16 acre of Private Land and 0.27 acre of GM Land. There is no Common Property Resources (CPR) within the study area. The private land has been acquired by the project and a ARAP was prepared and implemented in month 31 January 2019

Stakeholder Consultations & Need Assessments

For the preparation of Tribal Peoples Development Plan (TPDP) several consultations were conducted with various stakeholders from the gestation of the project to have a better understanding on the tribal issues, such that any adverse impact due to project implementation may be reduced or avoided.

For targeted community consultations, the identified villages within the study area with 50 percent and more tribal population were mapped and two tribal villages dominated areas were identified. This helped in planning the consultations with the community and key stakeholders. Consultations were conducted with - tribal community and their representatives within the study area along with project staffs.

Consultations were conducted with the local people and project staffs in identified tribal villages in the buffer area of the GSS Chowka for assessing their needs, accessibility to social security schemes and issues related to project construction and cultural sensitiveness of the area, etc. It was assessed during the community consultations and site visits that most of the tribal people are very much part of the mainstream population now.

Need assessment exercise was conducted in all the tribal villages of the study area through the process of community stakeholder consultations. The major needs as stated by the tribal people during consultations are:

- Availability of electricity
- Repair and Maintenance of drinking water sources and sanitation facilities
- Dedicated skill training for tribal women and men
- Common community meeting place with solar streetlight (Standpoint Light)

- Benefit from state sponsored and national flagship social security schemes.

Appropriate Mitigation Measures

During the stake holder consultation with Tribal Welfare Department, the details of identified needs of the villages were shared and found that the installation of solar streetlight in the state is being carried out by the JREDA which is the state nodal agency of the state for the promotions of renewable energy intervention. So, the decision was taken that the installation of solar streetlight in these tribal villages will be carried out by the JREDA. The rest proposed activities are distribution of sanitation kit and training will be carried out by PIU JUSNL with the support of PMC.

The detail of the proposed activities along with timelines is listed below in table.

Activities with Timeline:

Sl.No	Activities	Timeline	Responsible Agencies
1.	Installation and Commissioning of solar streetlight (20-Watt white LED based) (with GI pole, solar panel and control panel with accessories) on sacred grove such as Sarna, akhara, and other community places / institution.	T+90 days	JREDA
2.	Sanitation & Hygiene kit (Soap, Nail cutter, Toothbrush and Tongue Cleaner etc) including menstrual hygiene kit (Sanitary Napkin) among the tribal adolescents' girls.	T+90 days	PIU, JUSNL
3.	Training and capacity building on electrical safety measures and health & hygiene.	T+90 days	PIU, JUSNL

T= The effective Date of Approval of Tribal People Development Plan from World Bank.

Monitoring and Evaluation

The implementing agency, JUSNL will monitor the implementation of Tribal people development plan and share monitoring report with the World Bank.

S. No.	Activities	Implementation by	Supportive supervision
1.	Installation and commissioning of solar streetlight (20Watt white LED based) (with GI pole, solar panel and control panel with accessories) on sacred grove such as Sarna, akhara, and other community places / institution.	Jharkhand Renewable Energy Development Agency (JREDA)	Jharkhand Urja Sancharan Nigam LTD. (JUSNL), Ranchi
2.	Sanitation & Hygiene kit (Soap, Nail cutter, Toothbrush and Tongue Cleaner etc) including menstrual hygiene kit (Sanitary Napkin) among the tribal adolescents' girls.	PIU, JUSNL	Jharkhand Urja Sancharan Nigam LTD. (JUSNL), Ranchi
3.	Training and capacity building on electrical safety measures and health & hygiene.	PIU, JUSNL	Jharkhand Urja Sancharan Nigam LTD. (JUSNL), Ranchi

Grievance Redressal Mechanism

Grievances will be captured and readdressed through a three-tier grievance redressal system. First Tier at divisional level and will be addressed by Executive Engineer, second tier at circle level, Grievance will be addressed by the circle officer/DGM and similarly third tier at zone level, Grievance will be addressed by zonal officer/G.M. If any disputes come beyond the Grievance Redressal Cell (GRC), It will be addressed by the court of law state/nation.

Budget and Financing

Budget in line with each item of the activities identified during need assessment and finalised upon consultation with the villagers. A tentative budget amount has been calculated and made a part of this TPP. Budget of the proposed activities for the Tribal People Development Plan for the tribal villages of GSS Chowka is Eight Lac Seventy Thousand Seven Hundred Forty two only. The detail item wise cost is covered under the budget head of the Tribal People's Plan (TPP).

1. Introduction:

The Government of Jharkhand with active support of the Government of India's has planned for implementing 24X7 Power for All (PfA) in Jharkhand. The PfA roadmap includes interventions in generation, transmission, distribution, promotion of renewable energy, and increase energy efficiency. The Government of Jharkhand through **Jharkhand Urja Sancharan Nigam Limited (JUSNL)** has planned to develop the transmission infrastructure in the State. This transmission infrastructure development is being funded from different sources e.g., domestic fund, Public Private Partnership (PPP) and multilateral funding. The Jharkhand Urja Sanchar Nigam Limited (the state-run power transmission utility company) has approached the World Bank for assistance to fund a part of the transmission infrastructure under the Jharkhand Power System Improvement Project (JPSIP). The **Jharkhand Power System Improvement Project (JPSIP)** include: (a) Creation of 25 new 132 kV substations, and (b) Development of associated 132 KV transmission lines of around 1800 kms. These 25 new substations and associated transmission lines have been organised into different scheme and packages under Zone-I, II, III, IV.

The project has developed the **Environmental & Social Management Framework (ESMF)** including the **Tribal Development Planning Framework (TDPF)** which guides the Environmental and Social compliances, procedure and reporting under the project.

The Jharkhand Tribal Development Society, under Department of Welfare, Government of Jharkhand and Jharkhand Tribal Welfare Department consider village with more than 50 percent ST population as 'Tribal Village'. In alignment with the tribal population threshold considered by the government, the TPP has been prepared for village which has more than 50 percent ST population as per Census 2011 in the project footprint area.

This TPDP covers impacts in the project affected locations, the Grid Substation (GSS) Chowka and its surrounding area of approximately 2 km. The GSS Chowka is being constructed for the Ranchi cluster of Chowka –Tamar transmission line in Zone-III. It is located at Ghatdulmi village in district Saraikela Kharsawan in the state of Jharkhand. The GSS is located at approximately 90 km from the headquarter. The GSS is being constructed on a total Land area of 7.43 acre which includes 7.16 acre of Private Land and 0.27 acre of GM Land. There are two tribal village, viz Ghatdulmi and jungu, within

the study area of 2 kms . The total tribal population in the village is more than 50%. The TPDP has been prepared to manage and mitigate any impact on the tribal people due to project interventions. This document sets out policy, framework and implementation mechanism to address any impacts.

The major tribal community is Munda and their means of livelihood is majorly from agriculture and labour.

Table:1-Summary of GSS Chowka

SN	GSS	Location			No of Villages within 2 Km periphery of GSS Chowka	No of Tribal Villages within 2 km periphery of GSS Chowka having more than 50% Tribal Population
		Village	Block	District		
1	132/33kV	Ghatdulmi	Chandil	Saraikela Kharsawan	2	2

2. Objective:

The Tribal People Development Plan (TPDP) of GSS Chowka focuses and aims to provide special attention to the ST population within the study area in Ghatdulmi and Jurgu villages to capture issues related to social exclusions and equity. The principal objective of TPDP of GSS Chowka is to outline the various interventions and facilities to prevent exclusions of any kind, aligning the plan with World Bank OP 4.10. The objective of the Tribal Development Plan is to ensure:

- Appropriate and adequate benefits from the project.
- Monitor that project activities do not affect the cultural identities of the tribal people;
- Tribal people are adequately consulted; and
- Redress any grievances or concerns raised by the tribal people

The TPDP of Chowka GSS aims is to address the assessed needs of tribal people and the potential impacts in the project affected locations, through meaningful, realistic community betterment opportunities, such that they are culturally appropriate and economically sustainable, therein supporting the upliftment of tribal communities in the zone of influence of the project.

3. Methodology:

The Tribal Development Plan (TPDP) is prepared depending on the presence of dominant tribal population in 2 km study area of GSS Chowka– i.e., percentage of ST population in villages of study is viz Ghatdulmi and Jurgu

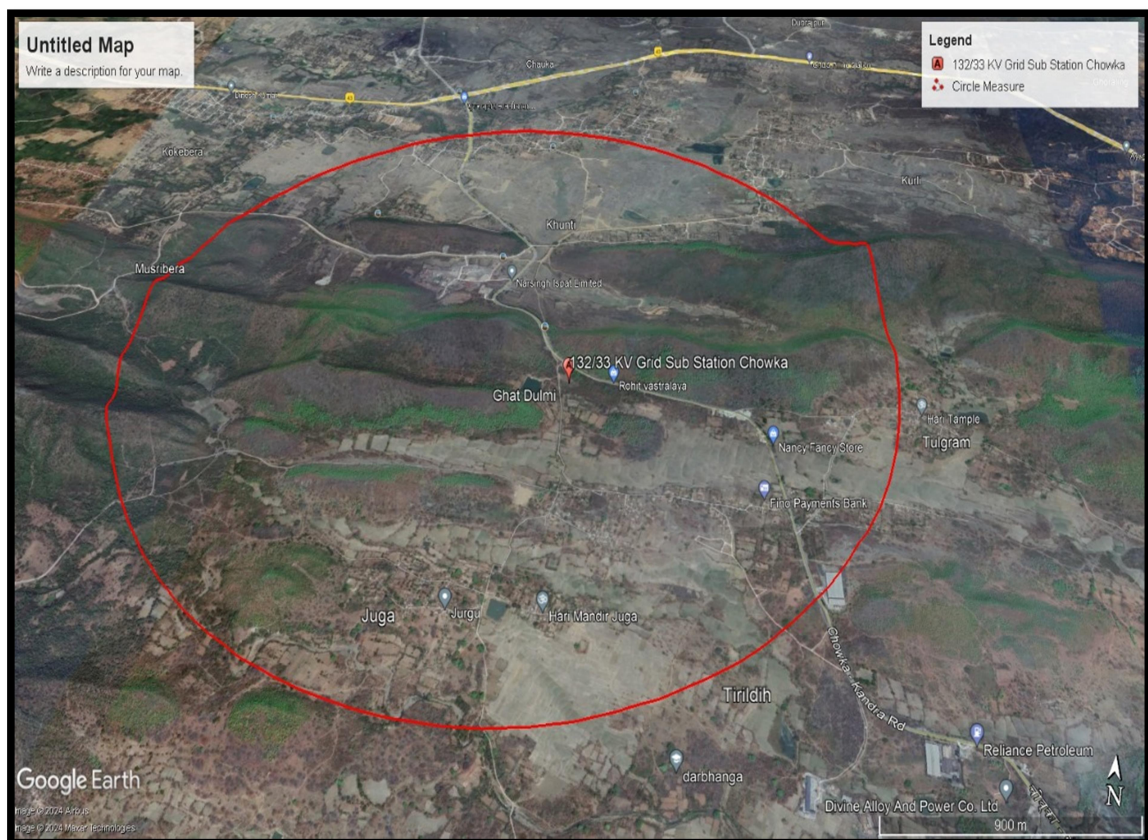
TPDP has been prepared by the following methodology:

3.1 Identification of Study Area:

Considering the project activity related to Grid Substation (GSS) it is anticipated that magnitude of project related impacts is likely to be perceived within 2 km surrounding area of GSS Chowka. If any impact will occur within the lifecycle of the project, the same is not envisaged to go beyond the 2 km. Hence, in view of this a radial distance up to 2 km from proposed Grid substation (GSS) boundary has been considered as study area for the present assignment.

The area covered under the study is Ghatdulmi and Jurgu villages where GSS site is proposed which is likely to be impacted due to the construction of GSS.

Figure-1: Map of Project Location and Ghatdulmi village



Grid substation (GSS), Chowka is located at Ghatdulmi tribal village in Chandil Block- district- Saraikela Kharsawan of Tribal Communities which is shown in figure-2.

3.2. Stakeholder Consultations:

During the preparation of Tribal People Development Plan (TPDP), the Stakeholders were identified at the community level and at the governance level. The Community level stakeholders are tribal people and their representatives. Similarly, the governance level stakeholders are Tribal Development Welfare Department (TWD) and implementing agency, Jharkhand Urja Sancharan Nigam Limited (JUSNL), Department of Energy Govt of Jharkhand.

3.2.1 Community level stakeholder consultation:

The community was consulted either through Focussed Group Discussion (FGD) or small community meeting in which we have discussed about the issues related to project, their needs, social inclusion, equity, and culturally appropriate mitigation measures. Details of community level consultations are given table no- 2.0.

Table No- 2 Details of Community level consultation

SL NO.	Date of Consultation	Village	Community and their representative
1.	06.01.2024	Ghatdulmi	Tribal People, Village Ward Member, SHG Member, Aganbari Worker, Gram Pradhan and village level public representatives and youth (Attached as Annexure-I)
2	06.07.2024	Ghatdulmi	Tribal People, Village Ward Member, Aganbari Worker, Gram Pradhan and village level public representatives and youth (Attached as Annexure-2)
3	06.07.2024	Jurgu	Tribal People, Village Ward Member, Aganbari Worker, Gram Pradhan and village level public representatives and youth (Attached as Annexure-3)

Figure: 3 Reflection of community consultation



Date 06/01/2024 Village Ghatdulmi



Date 06/01/2024 Village Ghatdulmi



Date 06/07/2024 Village Jurgu



Date 06/07/2024 Village Jurgu

Focus Group discussion on 06/01/2024, 06/07/2024 with the local people and project staffs in identified tribal village in the buffer area of the GSSs Chowka were conducted to assess their needs, accessibility to social security schemes and issues related to project construction and cultural sensitiveness of the area, etc.

3.2.2 Governance Level Stakeholder Consultation:

3.2.2.1 Consultation with Tribal Welfare Department

The Governance Level Stakeholder Consultation has been made with Tribal Welfare Department, Govt of Jharkhand to understand state welfare policy for tribal people and the feasibility of Jharkhand Urja Sancharan Nigam Limited to converge with their schemes for the benefit of the tribal community. The discussion was focussed on the matrix of the activity which was covered during the community consultation as a need assessment.

3.2.2.2 Consultation with JREDA

Stakeholder consultation with the Department of Jharkhand Renewable Energy Development Agency (JREDA), Govt of Jharkhand along with the JUSNL was held on 29/09/2023 in JREDA-JUSNL office.

Figure: 4 Reflections of State Consultations with JREDA



Sl. No	Name of the Participants	Designation	Department
1	Sri Ajay Kumar	General Manager	Contract & Materials (MLFP), JUSNL
2	Sri Mukesh Kumar	Executive Engineer	JREDA
3	Sri. Ranjit Kumar Mondal	Sr. Manager	Contract & Materials (MLFP), JUSNL
4	Sri. Ravi Ranjan	Sr. Manager	Contract & Materials (MLFP), JUSNL
5	Sri. Vivek Kumar	Manager	Contract & Materials

			(MLFP), JUSNL
6	Ms. Anjali Majhi	Manager	Contract & Materials (MLFP), JUSNL
7	Sri. Srinivash Parthi	Project Director	M/s MTCPL
8	Sri Abhishek Kumar	Project Manager	Zone-IV, Daltonganj, M/s MTCPL
9	Sri. Pradeep Singh Kashyap	Social Safeguard Expert	Zone-IV, Daltonganj, M/s MTCPL
10	Sri. Ramsurat Prasad	Environment Expert	Zone-IV, Daltonganj, M/s MTCPL
11	Sri. Ghanshyam Prasad Singh	Environment Expert	Zone-III, Jamshedpur, M/s MTCPL
12	Sri. Samir Kumar	Social Safeguard Expert	Zone-III, Jamshedpur, M/s MTCPL
13	Sri. Rajeev Ranjan	Sub Station Design Engineer	M/s MTCPL
14	Sri. Vijay kumar	Technical Assistant	M/s MTCPL
15	Sri. Shyam Soni	Environment Associate	M/s MTCPL

3.2.3 Decision: During the stake holder consultation with The Department of Jharkhand Renewable Energy Development Agency (JREDA) the detail proposed activities were shared and found that the installation of solar streetlight in the state is being carried out by the JREDA which is the state nodal agency of the state for the promotions of renewable energy intervention. So, the decision was taken that the installation of solar streetlight in this tribal village will be carried out by the JREDA. The rest proposed activities are distribution of sanitation kit and training will be carried out by PIU JUSNL with the support of PMC

3.2.3.1 Decision: During the stakeholder consultation with JREDA, the following decisions are taken:

- JREDA is agree for the installation & commissioning of solar streetlight as proposed activity in the Tribal People Development Plan (TPDP) as convergence.
- There is no needed of Memorandum of Understanding (MoU) between JREDA and JUSNL because both are under the department of Energy, Govt of Jharkhand.
- Only JUSNL will share the detail of villages with required quantity of solar streetlight as per zone and package.

- JREDA will allocate the works to the empanelled agency as per demand and request of JUSNL.
- The assigned work will be completed within one month after the fund transferred to the JREDA.
- JREDA will submit the Utilization Certificate (UC) after the completion of work.
- Monitoring of the installation will be done by assigned person of JUSNL along with JREDA.
- The quality of installation and equipment will be assured by the JREDA as per their technical specification.

The activities were discussed with JREDA along with JUSNL and the final feasible and practicable activities are mentioned in Table below:

SL NO.	Proposed Activities	Units
1	Installation of solar streetlight (with GI pole, solar panel and control panel with accessories) on sacred grove such as Sarna, akhara, and other community places.	20
2	Sanitation & Hygiene kit (Soap, Nail cutter, Toothbrush and Tongue Cleaner etc) including menstrual hygiene kit (Sanitary Napkin) among the tribal adolescents' girls.	100
3	Training and capacity building on electrical safety measures and health & hygiene.	4

- **The implementation strategy and procedure as discussed with JREDA are as below:**

Strategy:- Convergence with Jharkhand Renewable Energy Development Agency (JREDA), Govt. of Jharkhand.

Procedure: Fund will be transferred to the Jharkhand Renewable Energy Development Agency (JREDA) and proposed activities will be carried out by the JREDA. After completion of work within stipulated time, JREDA will have to submit the Utilization to the JUSNL. JREDA is itself under the department of Energy, Govt. of Jharkhand so; there will be not any Memorandum of Understanding (MOU) between JUSNL & JREDA. Based on the request letter by JUSNL, work will be carried out by JREDA under the supervision of PIU, JUSNL.& PMC.

4. Legal and Policy Framework:

4.1 National Laws:

Government of India has framed many policies and laws to safeguard the interest of the Scheduled Tribes. Article 366(25) of the Indian constitution refers to Scheduled Tribes (STs) as those communities who are scheduled in accordance with Article 342 of the Constitution. According to Article 342 of the Constitution, STs are the tribes or tribal communities or part of or groups within these tribes and tribal communities which have been declared as such by the President through a public notification. The constitutional safeguards related to tribal are:

- Article 14, related to equal rights and opportunities.
- Article 15, prohibits discrimination on grounds of sex, religion, race, caste etc.
- Article 15 (4) enjoins upon the state to make special provisions for the STs.
- Article 16 (3) empowers states to make special provisions for reservation in appointments or posts in favor of STs.
- Article 46 enjoins upon states to promote with special care educational and economic interests of STs, protection from social injustice and exploitation.
- Article 275 (I), grant-in-aid for promoting the welfare of STs.
- Article 330, 332, 335, related to the reservation of seats for STs in Lok Sabha and State Assemblies; and
- Article 339, 340, related to Control of the Union over the Welfare of STs and powers to investigations thereof. One of the important Acts which ensures Social Safeguards of the STs is "Scheduled Castes and the Scheduled Tribes (Prevention of Atrocities) Act, 1989.

The applicable legal and policy framework is provided below:

Table-3: Applicable National Laws, Policies and State Rules

Acts / Rules / Policies	Objective	Applicability to The Project
5th Schedule of Constitution (Article 244) (See details at the end of the table 3.1)	Provides for the administration and control of Scheduled Areas and Scheduled Tribes. Article 244(1) and Article 244 (2) of the constitution of India enables the government to enact separate laws for governance and administration of the tribal areas. In pursuance of these articles, President of India had asked each of the state to identify tribal dominated areas. Areas thus identified by the states were declared as Fifth schedule areas	For sub-projects (transmission lines and towers) passing through Scheduled Areas
Panchayats (Extension to Scheduled Areas) Act, 1996	The provision of PESA Act extends the provisions of Part IX of constitution relating to Panchayats to the Scheduled Areas. As per the provisions, every village in Schedule V areas will have Gram Sabha which would approve of the plans, programmes and projects for social and economic development before such plans, programmes and projects are taken up for implementation at village level.	For approval of any sub-project located in Scheduled Areas
The Scheduled Tribes and Other Traditional Forest Dwellers (Recognition of Forest	The act recognizes and vests the forest rights and occupation in forest land in forest dwelling Scheduled Tribes and other traditional forest dwellers who has been residing in such forests for generations but whose rights could not be recorded. The act provides a framework for recording forest rights so	For sub-projects (transmission lines and towers) passing through forest land

Acts / Rules / Policies	Objective	Applicability to The Project
Rights) Act, 2006	vested and the nature of evidence required for such recognition and vesting in respect of forest land.	
Chotanagpur Tenancy Act (CNT Act), 1908	<p>Chotanagpur Tenancy Act (CNT Act), 1908, determine the incidence of tenancy, the respective rights and obligations of the tenants in the Chotanagpur administrative division of Jharkhand.</p> <p><u>CNT Act, 1908</u></p> <p>The following sections of the CNT Act describe the land holding and the transfer of land:</p> <ul style="list-style-type: none"> • Section 4 of the CNT Act describes the classes of tenants. • Section 46 and 49 of the CNT Act regulates sale and purchase of tribal land. Section 46 allows tribal to tribal land transfer but with the permission of Deputy Commissioner (DC). • Section 49 of the CNT Act allows transfer of land from tribal to non-tribal for industries and agriculture. As per the section tribal land can be sold to non-tribals too but only for the purpose of putting up industries or for agriculture work — but in this case the permission requirement has been changed. Rather than Deputy Commissioners (as provided in the original Act), permission is needed from the revenue department. 	<p>During transfer of tribal land to non-tribal or land to be used for public purpose in Schedules areas of Chotanagpur administrative area, necessary permission of DC is essential. Applications to this effect have to be made by JUSNL and the conditions imposed by DC have to be complied with.</p>

Acts / Rules / Policies	Objective	Applicability to The Project
Santhal Pargana Tenancy Act (SPT Act), 1949	<p>Santhal Pargana Tenancy Act (SPT Act) 1949, determine the incidence of tenancy, the respective rights and obligations of the tenants in the Santhal Pargana administrative division of Jharkhand.</p> <p>The following sections of the SPT Act describe the land holding and the transfer of land:</p> <ul style="list-style-type: none"> • Section 20 of the SPT Act, 1949 prohibits transfer, settlement or lease in any manner, unless the right to transfer is recorded in the record of rights, in respect to any raiyati holding. • Section 42 of the SPT Act is one such provision which permits eviction and restoration of possession of encroached agricultural land. The power under this Section is not administrative but statutory and has to be exercised according to the right of the parties 	<p>During transfer of tribal land to non-tribal or land to be used for public purpose in Schedules areas of Santhal Pargana administrative area, necessary permission of DC is essential. Applications to this effect have to be made by JUSNL and the conditions imposed by DC have to be complied with.</p>
The Scheduled Caste and Scheduled Tribes (Prevention of Atrocities) Rules, 1995	<p>This Act provides for specific provisions to prevent atrocities on the Scheduled Castes and the Scheduled Tribes and suggests State Governments to frame rules for the same. This includes. Identification of areas where atrocity may take place or there is an apprehension of re-occurrence of an offence under the Act. The State Government is required to set up a “Scheduled Castes and the Scheduled Tribes Protection Cell” at the state headquarters headed by the Director of Police, Inspector-General of Police. This Cell is responsible for, conducting survey of the identified</p>	<p>This is applicable in the project as there will be tribal settlements on the alignment and there are chances of atrocities being committed by staff / labour force of contractor.</p>

Acts / Rules / Policies	Objective	Applicability to The Project
	<p>area.</p> <p>Maintaining public order and tranquillity in the identified area; recommending deployment of special police or establishment of special police post in the identified area; and restoring the feeling of security amongst the members of the Scheduled Castes and the Scheduled Tribes.</p>	

5.0 World Bank Operational Policy/Bank Procedure 4.10: The applicable World Bank Operational Policy/Bank Procedure- 4.10 for Indigenous People is provided below:

Table-4: Applicable World Bank Policy-4.10:

WB Policy & Applicability	Description
OP 4.10 Indigenous People	<p>The policy aims to protect the dignity, right and cultural uniqueness of indigenous people, to ensure that they do not suffer due to development and that they receive social and economic benefits.</p> <p>This policy contributes to the Bank's mission of poverty reduction and sustainable development by ensuring that the development process fully respects the dignity, human rights, economies, and cultures of Indigenous Peoples. The Bank provides project financing only where free, prior, and informed consultation results in broad community support to the project by the affected Indigenous Peoples.</p>
Applicability	The policy is triggered as there are indigenous /tribal people in the project area, though no adverse impact on tribal people is anticipated, instead they will be among the intended beneficiaries.

6. Socio-Economic Profile:

6.1 Tribal Population in Jharkhand:

The state of Jharkhand has a considerable tribal population. The Scheduled Tribe (ST) population of Jharkhand State as per 2011 census is 8,645,042, constituting 26.2percent of the total population (3,29,88134) of the State. The growth of the ST population has been 17.3percent which is lower by 5 percent if compared with the growth of the State's total population (22.42 percent) during 2001-2011. The right of the tribal are protected by Chota-Nagpur Tenancy Act (CNT), 1908 and Santhal Parganas Tenancy Act (SPT), 1949. Jharkhand is home to 32 tribal communities. Among the thirty-two (32) Notified Scheduled Tribes, the Santhals are the most populous tribe with a population of about 2,410,509 and constituting 34 percent of the total ST population of the State. Oraon, Munda, and Ho, are the next ranked in terms of population constituting 19.6, 14.8 and 10.5 percent respectively of the total ST population of the State. Four other major tribes, Kharia, Bhumij, Lohra and Kharwar with population ranging from about 164,022 to192,024 together with the Santhal, Oraon, Munda and Ho, constitute 89.1percent of the total tribal population. The Chero, Bedia, Mal Pahariya and

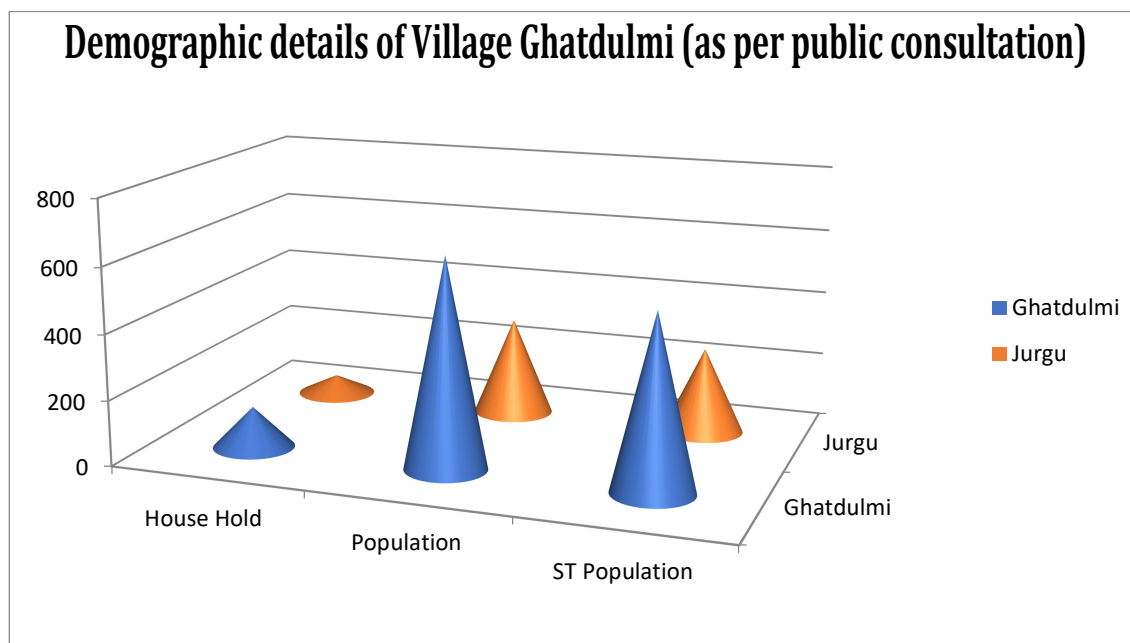
Mahli tribes in the population range of 75,540 to 121,174 account for another 5.6 percent; the remaining 18 tribes, along with the generic tribes constitute the balance 5.3 percent of the total ST population.

There are also 8 primitive tribal groups – classified as the Particularly Vulnerable Tribal Group PVTG (earlier known as PTG-Primitive Tribal Groups) and they are – Asur, Birhor, Birajia, Korwa, Parahiya (Baiga), Sabbar, Mal Pahariya and Souriya Pahariya.

Total two tribal villages were mapped and identified within the 2 km periphery of the GSS Chowka which have more than 50% tribal population. These tribal villages are Ghatdulmi and Jurgu. The total households and population in the villages are 641 respectively. The tribal Population in the village is 533 which is approximately more than 83.15%. The demographic detail of these villages are shown in table-5 below:

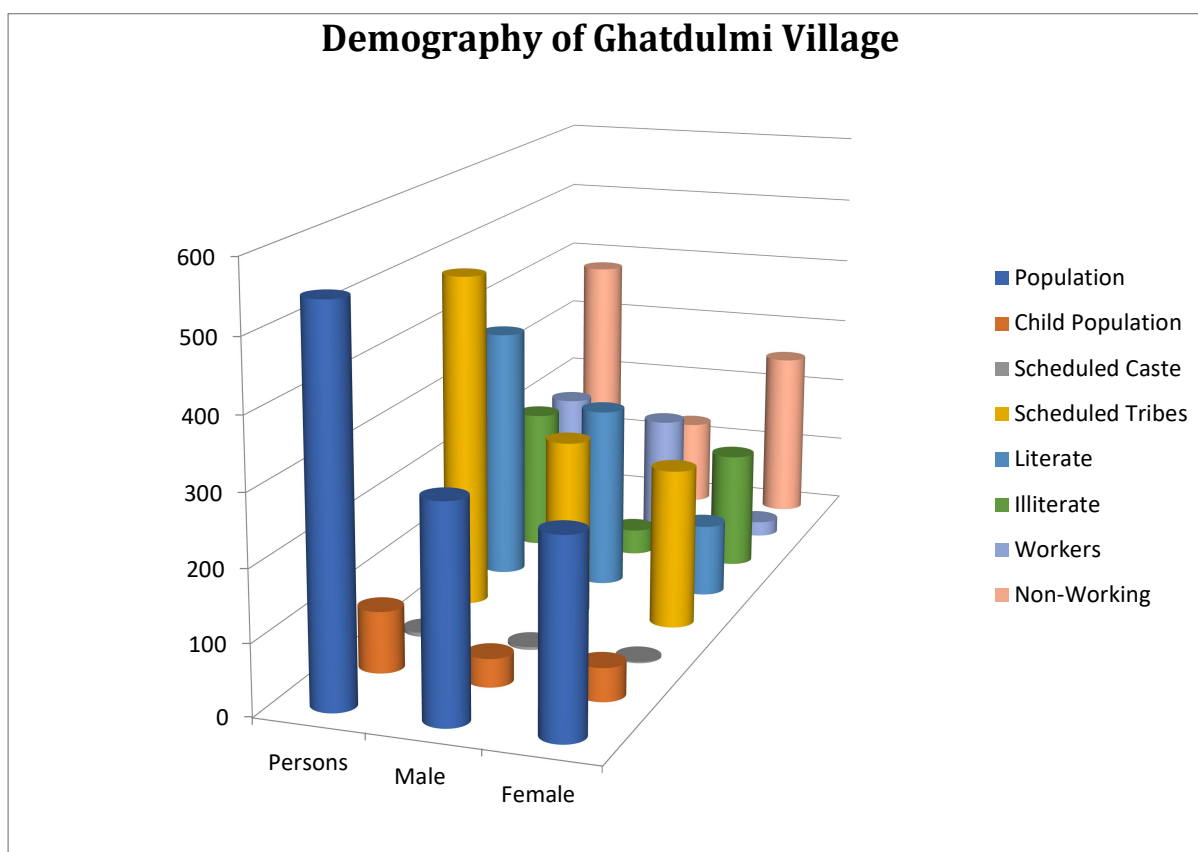
Table:5- Demographic details of Villages Ghatdulmi and Jurgu (as per public consultation)

SN	Village	HH	Population	ST Population
1	Ghatdulmi	126	641	533
2	Jurgu	59	303	264
Total		185	944	797



Demography of Ghatdulmi Village

Village	Popul ation	Child Populat ion	Schedu led Caste	Schedu led Tribes	Liter ate	Illiter ate	Work ers	Non- Worki ng
Persons	573	87	6	484	367	206	193	380
Male	300	40	4	255	263	37	171	129
Female	273	47	2	229	104	169	22	251



Demography of Jurgu Village

Village	Popul ation	Child Populat ion	Schedu led Caste	Schedu led Tribes	Literat e	Illite rate	Work ers	Non- Worki ng
Persons	303	42	0	264	169	134	172	131
Male	148	19	0	127	100	48	81	67
Female	155	23	0	137	69	86	91	64

Demography of Jurgu Village

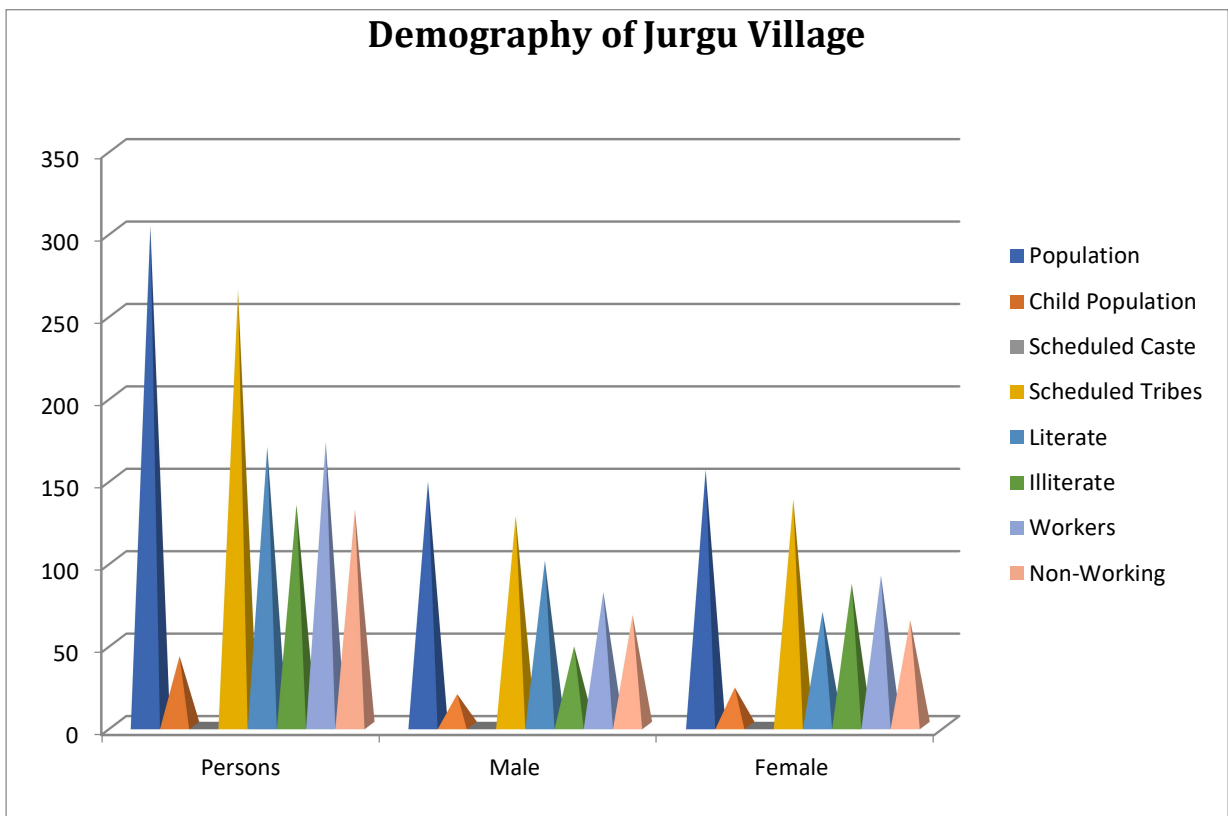


Table: 6- Demographic details of Habitation in Village Ghatdulmi (as per public consultation)

SN	Habitation	Rural Population	House Hold
1	Ghatdulmi	140	27
2	Upar Tola	135	27
3	Nich Tola	159	32
4	Hat Tola	121	24
5	School Tola	86	16

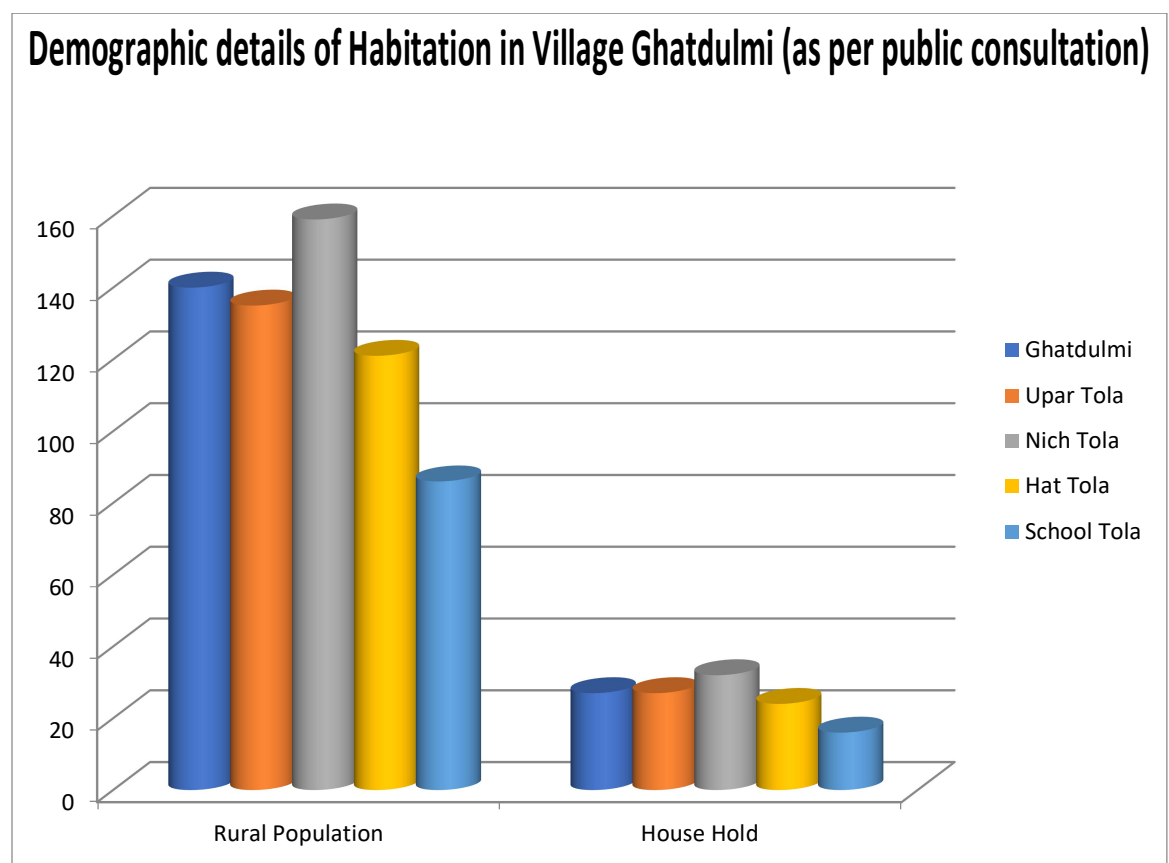
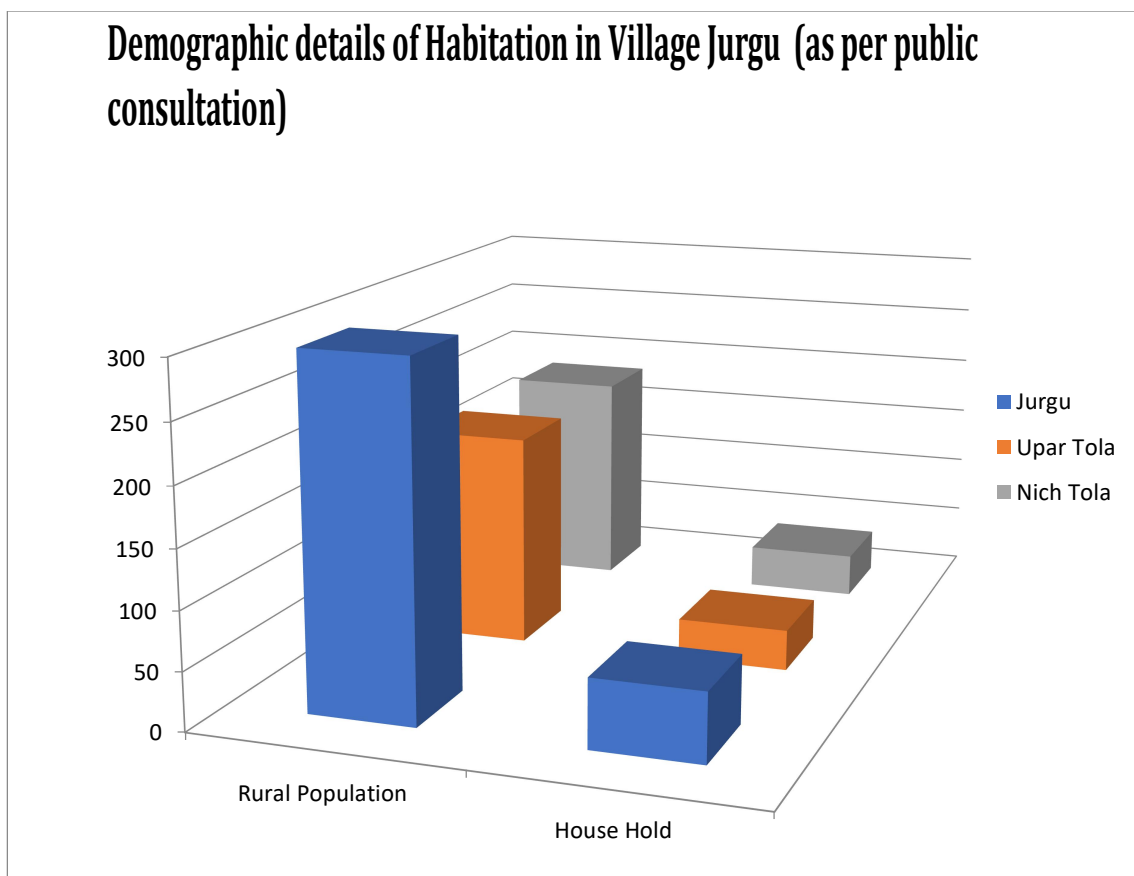


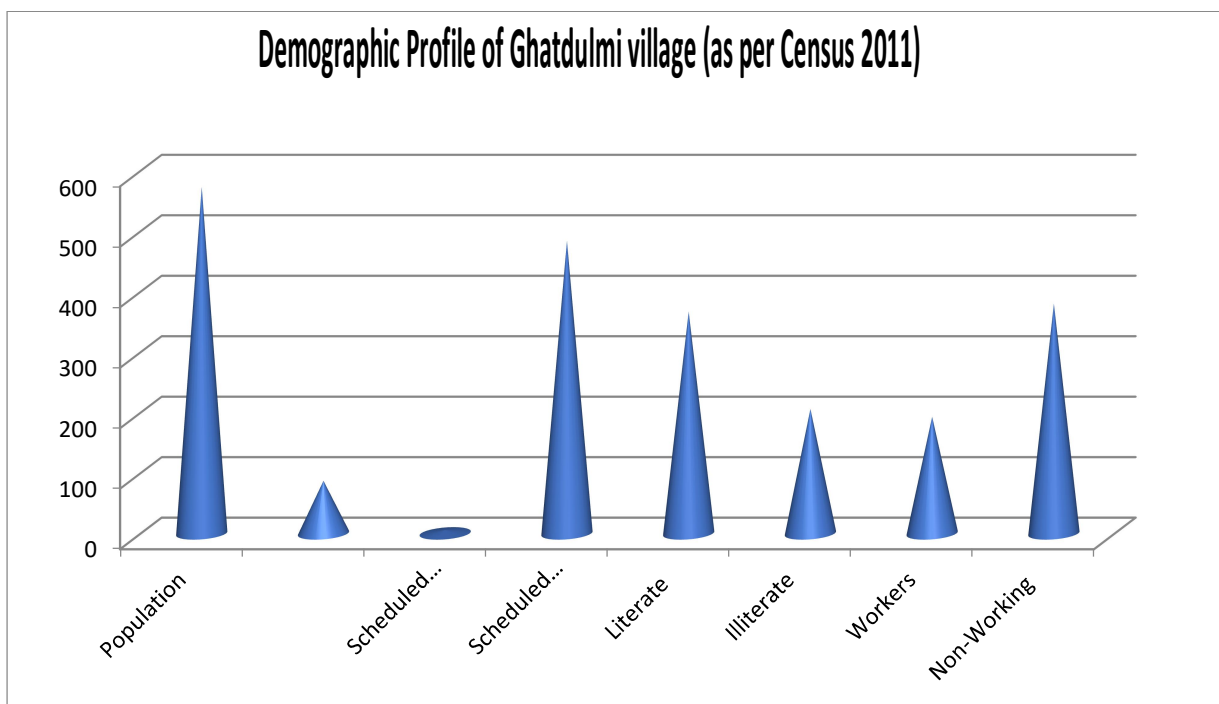
Table: 6- Demographic details of Habitation in Village Jurgu (as per public consultation)

SN	Habitation	Rural Population	House Hold
1	Jurgu	299	59
2	Upar Tola	182	35
3	Nich Tola	184	37



5.1 Demographic Profile of Ghatdulmi village (as per Census 2011)

S N	Village	Population	Child Population	Scheduled Caste	Scheduled Tribes	Literate	Illiterate	Workers	Non-Working
1	Ghatdulmi	573	87	6	484	367	206	193	380

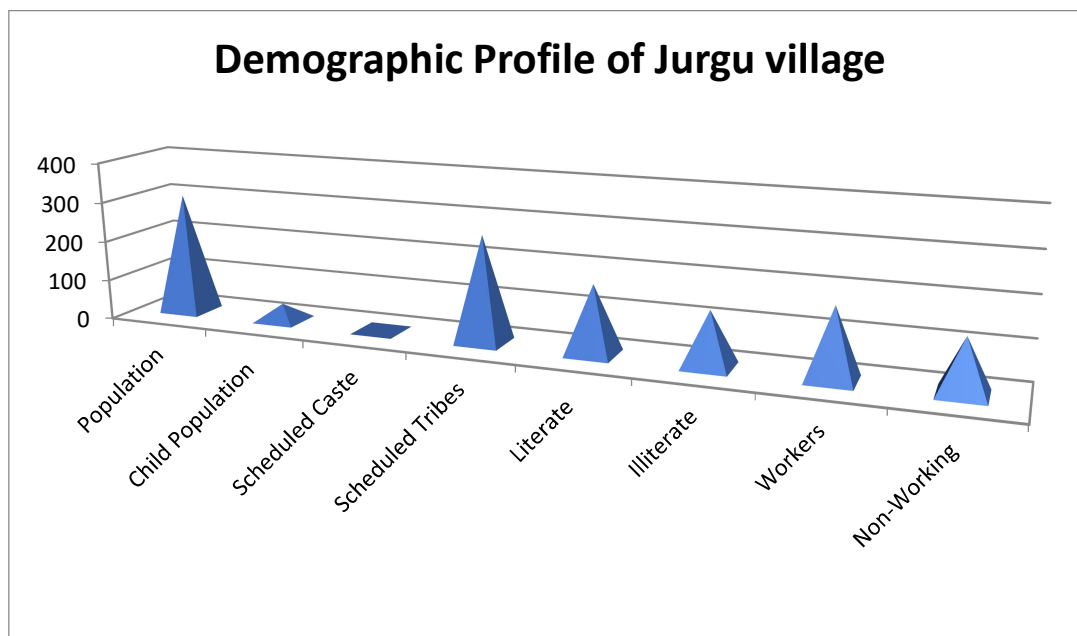


- During Study area in Ghatdulmi village has lower literacy rate compared to Jharkhand. In 2011, literacy rate of Ghatdulmi village was 64.20 % compared to 66.41 % of Jharkhand.
- In Ghat Dulmi village, most of the village population is from Schedule Tribe (ST). Schedule Tribe (ST) constitutes 84.47 % while Schedule Caste (SC) were 1.05 % of total population in Ghat Dulmi village.

In Ghat Dulmi village out of total population, 193 were engaged in work activities. 21.24 % of workers describe their work as Main Work (Employment or Earning more than 6 Months) while 78.76 % were involved in Marginal activity providing livelihood for less than 6 months. And 193 workers engaged in Main Work

5.2 Demographic Profile of Jurgu village (as per Census 2011)

S N	Village	Pop ulation	Child Populat ion	Scheduled Caste	Scheduled Tribes	Liter ate	Illiter ate	Work ers	Non- Worki ng
1	Jurgu	303	42	0	264	169	134	172	131



- During Study area in Jurgu village has lower literacy rate compared to Jharkhand. In 2011, literacy rate of Jurgu village was 55.56 % compared to 66.41 % of Jharkhand.
- In Jurgu village, most of the village population is from Schedule Tribe (ST). Schedule Tribe (ST) constitutes 87.13 % and there is no Schedule Caste (SC) in Jurgu village.
- In Jurgu village out of total population, 172 were engaged in work activities. 100 % of workers describe their work as Main Work (Employment or Earning more than 6 Months) while 0.00 % were involved in Marginal activity providing livelihood for less than 6 months. And 172 workers engaged in Main Work

6.2 Sources of Drinking Water:

For drinking purpose, availability of water is generally in the form of Ground water sourced through hand pump and well serves mostly to the needs of household drinking water consumption however no tap water facility is available for drinking water, available in village. The primary school falling within the study area has hand pump facility and separate toilet facilities for boys and girls.

6.3 Sanitation Facilities:

The Swachh Survekshan Gramin, 2020 survey conducted for monitoring progress of Swachha Bharat Mission (SBM) indicates that toilet coverage in Ghatdulmi and Jurgu villages are 100% and Declared as Open Defecation Free (ODF) and govt of Jharkhand is also propping for the ODF plus by doing the Solid Liquid Waste Management (SLWM) intervention and Biogas under the GOBAR Dhan Project. During consultation, it was informed by the villagers that open defecation practice is prevalent among most of the village.

6.4 Accessibility to social security Schemes:

Free rice scheme under the Deen Dayal Upadhyay Antodaya Yojna is the most successful scheme followed by the Minimum Support Scheme, Indira Gandhi National Old Age Pension scheme and Mukhyamantri Sarva Jan Pension Yojna. There are also few social security schemes in the state which are State social security Pension scheme, Indira Gandhi National widow Pension Scheme, Foster care Sponsorship Schemes. All villagers are benefitted from these social security schemes.

7. Impacts due to Project Implementation:

This section identifies the potential impacts, both positive and adverse, that may affect the tribal people within the study area due to the implementation of GSS Chowka under the Jharkhand Power System Improvement Project (JPSIP).

7.1 Positive Impacts:

The proposed project aims to improve 24x7 power availability and provide quality power supply to both domestic and industrial users, social entrepreneurs among the tribal people in all these two villages of GSS Chowka. The proposed project also aims to ensure consistent power supply to reduce other alternate sources of energy.

7.2 Increased Social Inclusion and Improved Quality of Life:

The all mass and class of the study area of the GSS Chowka will be benefitted from the uninterrupted 24X7 power supply. Obviously, all social structures such as General, Other Backward Classes (OBC), Scheduled Caste (SC), Scheduled Tribes (ST) and Particularly Vulnerable Tribal Groups (PVTGs) will be included for the benefit of the reliable power will have best opportunities as social and business entrepreneur within the project area. So, project will follow the social inclusion deeply as per World Bank social safeguards operational policy.

Improved electricity supply will also support the economic development of the significantly large tribal population in the study area. Additionally, access to electricity in tribal village would reduce the time spent by women on household activities which will ensure availability of more time for other economically productive activities. Access to electricity will also enable better access to safe potable water, food security, health and reduce unproductive hours for other labour intensive manually driven activities.

7.3 Positive Impact for Women & Girl:

The uninterrupted power supply 24X7 will improve the women's and girl's education, healthcare, employment and gender equality. It also improves the quality of life of women and girls by avoiding the unproductive household working hours.

7.4 Adverse Impacts: 7.4.1 Impact on land

The total required land for the GSS is 7.43 acre, out of which 7.16 acre is Private Land and 0.27 acre is GM Land. The private land has been acquired by the project. An ARAP was prepared to mitigate the impact due to land acquisition. The ARAP was implemented and the compensation for the land acquisition was paid to the 17 affected families in 31 January 2019. The GM land was also transferred to the project for the construction of the GSS in 10 July 2019.

7.4.2 Common Property Resource (CPR):

During construction of the substation, Chowka, for obtaining access to the tower location or substation works, the contractor would use existing roads to the extent feasible i.e., existing National/State highway or local village roads. During the construction phase, due to the movement of the construction related vehicles and machinery, some of the roads, especially the village roads may get damaged. Additionally, some village roads may not be in a condition that it can be used for movement of heavy construction vehicles. In such conditions, the use of these roads would further lead to deterioration and impact available common property resources and infrastructures. Some culverts or other common utilities e.g. distribution poles, may also get damaged during the construction activities causing

temporary difficulties to the local community in general, and including tribal people in the ST dominated village.

7.4.2 Tribal Communities and Cultural Properties:

The Villages, Ghatdulmi and Jurgu are comes under the study area of the tribal villages within the influence area of the GSS Chowka. Generally, tribal communities are closely tied to ancestral domains and natural resources, including land, forest, water, and others. Hence, their ties in terms of their customary rights to these ancestral domains which they traditionally own, use, or occupy, and where relevant, access to natural resources is vital for their survival and livelihood system. For example, sacred groves are of great cultural importance to the tribal population - the groves.

It was also mentioned by tribal people during this consultations that they do not have any issue if GSS Chowka constructed in Ghatdulmi village.

8.0 Need assessment:

A need assessment exercise was conducted, in Ghatdulmi and Jurgu tribal villages and settlements adjacent to the GSS sites through the process of stakeholder consultations. Apart from the consultations with the communities, consultations were also conducted with key informants (*Mukhiyas*, head of Gram Panchayats , Ward member and village *Pradhans*, headman of the tribal community). The key needs as stated by the tribal people during consultations are discussed below:

8.1 Need for Waste Water Management:

The drinking water sources such as Hand Pumps and piped water supply schemes (small and community based) are given to community under the Jal Jeevan Mission (JJM) but there are lots of issues of water logging around the water sources which creates foul and smell. The dirtiness and unhygienic conditions around the drinking water sources may contaminate the water and may lead to health issues on tribal people. So, there should be proper wastewater management intervention by constructing small length drain and scientific soak pit along with the water sources either through direct intervention by JUSNL or convergence with Swachh Bharat Mission Gramin (SBMG) under the ODF+ and Solid Liquid Waste Management (SLWM) schemes.

8.2 Sanitation facilities:

Although, Ghatdulmi and Jurgu Villages of the study area have declared the Open Defecation Free (ODF) by ensured the individual leach pit toilet (Twin Pit) to each household under the Swachh Bharat Mission Gramin (SBMG). But during the community consultation, tribal people has flagged some issues related to sanitation facilities such as repair and maintenance (Refurbishment) of the defunct

Individual Household Latrine (IHHL). It is the major need of the tribal people as well as also the Govt of Jharkhand to maintain the sustainable manner of the Open Defecation Free (ODF) village. The good sanitation facilities concern to health and hygiene of the tribal people especially for women, girls, and children.

8.3 Skill Training for Women & Men:

In tribal Village Ghatdulmi and Jurgu where consultations have been conducted, the villagers expressed the need for arrangements that may be provided for skills trainings both for women and men so that they can initiate some vocations of their own choice. Due to the climate and terrain of the region, agriculture is possible in most areas for only one season. Sustenance for the population for the rest of the year becomes a major concern. Weaving grass mattress is one of the traditional skills of the tribal women as reported by them. So, linkage of marketing with Jharcraft is needed for the selling of prepared weaved grass mattress and other tribal craft.

8.4 Repairing of Access Road:

Condition of the internal access roads to many of the village is another major concern flagged by the villagers. The movements of heavy vehicles during the construction phase of the project may lead to deterioration of the conditions of the local village roads. Stakeholders have expressed that these roads may be repaired and maintained in a good state such that heavy vehicular movement does not damage them.

8.5 Ensuring availability of electricity:

It has been observed that it is a very common expectation among the communities that construction of substations will facilitate electricity supply in local areas. This has been expressed as a need, especially in certain village (where consultations were held). The other concern being the steady supply of electricity in the village; some the village reported that although they have electricity connections, they get electricity supply for only a short duration of 4-5 hours in a day.

Table – 6 Overall needs of the study areas within GSS of Chowka

SL No.	Needs of Tribal identified during the consultation
1	Construction of raised platform, drain linked to Soak Pit along with Piped Water Supply Scheme stand post and Hand Pumps under the wastewater management.
2.	Repair and maintenance of existing hand pumps and household tape connection.
2.	Refurbishment of defunct Individual Household Leach Pit toilet and community-based leach pit toilet.
3.	Linkage of Jharcraft for the marketing and promotion of tribal craft.

4	Installation and Commissioning of solar streetlight (20 Watt white LED based) (with GI pole, solar panel and control panel with accessories) on sacred grove such as Sarna, akhara, and other community places/ institution.
5	Repairing of village road.
6	Coverage of all households under all social security scheme of National and State flagship schemes
7	Linkage of tribal peoples with farmer producer groups and farmer producer company as a local level livelihood option under the NRLM, JOHAR, Rural Development Department, Gov of Jharkhand
8	Linkage of the Tribal Peoples with MNREGA for the generation of the employment at the local level.
9	Sanitation & Hygiene kit (Soap, Nail cutter, Tooth Brush and Tongue Cleaner etc) including menstrual hygiene kit (Sanitary Napkin) among the tribal adolescents girls.
10	Small health camp for the women, girls and children.

9.0 Mitigation Measures:

All the need identified during the community consultation with Ghatdulmi and and Jurgu Villagers were assessed. Many of the needs as raised by the villagers are being covered national flagship/state sponsored project. The detail of the feasible activities to be covered under this TPP is listed below in table 7.

Table: 7 Mapping of Mitigation options based on need assessment:

SL No.	Proposed Activities
1	Installation and Commissioning of solar streetlight (20 Watt white LED based) (with GI pole, solar panel and control panel with accessories) on sacred grove such as Sarna, akhara, and other community places / institution.
2	Sanitation & Hygiene kit (Soap, Nail cutter, Toothbrush and Tongue Cleaner etc) including menstrual hygiene kit (Sanitary Napkin) among the tribal adolescents' girls.
3	Training and capacity building on electrical safety measures and health & hygiene.

9.1 Activities with Timeline:

Sl.No	Activities	Timeline	Responsible Agencies
1.	Installation and Commissioning of solar streetlight (20 Watt white LED based) (with GI pole, solar panel and control panel with accessories) on sacred grove such as Sarna, akhara, and other community places / institution.	T+90 days	JREDA
2.	Sanitation & Hygiene kit (Soap, Nail cutter, Toothbrush and Tongue Cleaner etc) including menstrual hygiene kit (Sanitary Napkin) among the tribal adolescents' girls.	T+60 days	PIU, JUSNL
3.	Training and capacity building on electrical safety measures and health & hygiene.	T+60 days	PIU, JUSNL

10. Institution and Implementation Arrangements:

10.1 Institutional and Implementation Arrangement in JUSNL:

In order to implement the Tribal People Development Plan (TPDP), it is proposed that the Project Implementation Unit of JUSNL (PIU) to be adequately equipped. Presently the JUSNL PIU headquarters in Ranchi is housed with following personnel:

- Chief Engineer (Transmission; O&M)
- Superintending Engineer
- Executive Engineer
- Assistant Engineer

To specifically address the issues related TPDP, PIU JPSIP will have a supportive supervision in addressing tribal issues and effective implementation of Tribal People Development Plan (TPDP) as per project rules and regulations. In addition, during the implementation of JPSIP since the Junior Engineer of the respective section would be responsible for the supervision of implementation of the TPDP. It is proposed that he should also be trained on Tribal Development aspects.

10.2 Support form Traditional Institutions in Tribal areas of Jharkhand

Apart from administrative set up, JUSNL will take the support from the traditional governance system in the respective tribal areas. There are four different traditional governance system in different tribal regions in Jharkhand as under:

- Munda- Manki system in Ho areas.
- Parha system in Oraon villages.
- Munda- Manki system in Khuntkatti Munda dominated areas.
- Manjhi Pradhan system in Santhal.

In Ghatdulmi and Jurgu villages, Munda Aadiwasi prevail and these institutional systems will also have to be considered for any planning and implementation of the Tribal Development Plan once prepared as they have substantial influence in the tribal areas in their respective communities and people often have more faith in these than government and PRIs. So JUSNL will take help from these traditional governance systems in local tribal dominant area.

11.0 TPDP Implementation Strategy

It is envisaged that proper implementation of TPDP is possible only through community participation. The participatory approach will ensure:

- i. Promotion of community concern and involvement
- ii. Proper organization and management of resources
- iii. Setting up of criteria and fixing criteria and procedures for project execution are done at the grass root level.

Followings are the criteria for the Implementation of Tribal People Development Plan:

- Community is engaged for site Identification of the installation of the solar streetlight.
- Site for solar street light installation sacred groves of tribal, community places, community institutions such as school etc.
- Distribution of sanitation kit among the tribal adolescence girl or vulnerable tribal girl.
- Training on electrical safety measures in four session in village and Habitation.
- Distribution of sanitation kit and training will be carried out by PIU JUSNL or officers assigned by JUSNL or Concerned PMC.

Site Identification: Site identification has been done with community engagement of Tribal Ghatdulmi and Jurgu Villages and Habitation associated GSS Chowka along with Village Ward Mamber, Miss Bharti Devi and Tribal People, Farmer, Village Level public representatives. Total 10 sites were identified for the installation of solar streetlight as proposed activities in Tribal People Development Plan (TPDP).

List of Installation of Solar Light at Village Ghatdulmi

Sl No	Place	No of Installation Solar Light
1	Near Water Tank	1
2	Near Hari Temple	1
3	Samrendra Mandal (Jagarnath Das) Mod	1
4	Panchyat Chabutra near water Tank	1
5	Near Supai Hansda Home	1
6	Near Place of Jaher (Choraha)	1
7	Near Haat Area	1
8	Near in front of Banmali Lohra Home (Water Tank)	1
9	Near in front of Health Center	1
10	Near Sukul Singh Home (Gram Mod)	1

List of Installation of Solar Light at Village Jargu

Sl No	Place	No of Installation Solar Light
1	Hari Temple (Puja Sthal)	1
2	Aganbari Center	1
3	Primary School	1
4	Sansakrati Bhwan (Kala Kendra)	1
5	Near Dherendra Manjhi House	1
6	Near Hiro Manjhi House	1
7	Near Shripati House	1
8	Near Malhaan Manjhi House	1
9	Near Virendra Manjhi House	1
10	Mansa Temple (Puja Sthal)	1

The strategy includes:

Strategy-: Convergence with **Jharkhand Renewable Energy Development Agency (JREDA)**, Govt of Jharkhand for the solar street light installation

Procedure: Fund will be transferred to the Jharkhand Renewable Energy Development Agency (JREDA) and proposed activities will be carried out by the JREDA. After completion of work within stipulated time period, JREDA will have to submit the Utilization to the PIU, JUSNL.

Appropriate people's organization and forum need to be built and strengthened to ensure effective people representation and empowerment in the process of selection of specific community development activities and their execution. The conventional top-down approach to project implementation through prevailing bureaucratic framework, need to be reoriented for the framework of participative administrative structure to respond to bottom-up initiatives based on participatory process for informed community participation and empowerment.

12. Monitoring and Evaluation

Monitoring and evaluation is an integral part of any project implementation in order to measure project performance and achieve project objectives. It is the continuing and the systematic process of collecting, analysing, interpreting and reporting information relevant to planning, implementation, evaluation and adjustment of plans, policy, programs and projects in support of decision making of management and key stakeholders to improve delivery of outputs and sustainability of results.

The implementing agency, JUSNL would conduct assessment of the implementation of Tribal development Plan and verify internal monitoring carried out to suggest adjustments in delivery mechanism and procedures required and report it to World Bank.

12.1 Monitoring Matrix:

Sl.No	Activities	Implementation by	Supportive supervision
1.	Installation and commissioning of solar streetlight (20Watt white LED based) (with GI pole, solar panel and control panel with accessories) on sacred grove such as Sarna, akhara, and other community places / institution.	Jharkhand Renewable Energy Development Agency (JREDA)	Jharkhand Urja Sancharan Nigam LTD. (JUSNL), Ranchi

2.	Sanitation & Hygiene kit (Soap, Nail cutter, Toothbrush and Tongue Cleaner etc) including menstrual hygiene kit (Sanitary Napkin) among the tribal adolescents' girls.	PIU, JUSNL	Jharkhand Urja Sancharan Nigam LTD. (JUSNL), Ranchi
3.	Training and capacity building on electrical safety measures and health & hygiene.	PIU, JUSNL	Jharkhand Urja Sancharan Nigam LTD. (JUSNL), Ranchi

13. Grievance Redressal Mechanism:

The grievance redressal will be addressed at three-tier level under the project as described below:

Tier 1: Circle Level: The complaints or grievances may be received by the Junior Engineer in charge of the site or at the Divisional/Sub-Divisional Offices of JUSNL. The complaints will be reviewed at level one and efforts will be made to resolve them in consultation with the affected persons or any other stakeholder, who has lodged the grievance/complaint. At 1st Level it will take to resolve the grievance/complaint within a period of 21 days from the date of receipt of the complaint. In case the aggrieved is not satisfied with the solution provided Tier 1 he may appeal it to Tier 2: Zone Level.

Tier 2: Zonal Level: Complaints /grievances that cannot be resolved at Level 1 or if the complainant is not satisfied with the decision of the Tier 1 and appeals for redressal only such cases would be taken up at Tier II. The Chief Engineer cum GM of the respective Zone and all the Superintending Engineers of the Zone would be the members of Tier 2 level. They would hear the aggrieved and also review the proceedings of the Division Level and provide relief to the aggrieved the entire process would be completed within 45 days of the complaint being referred to Tier II. If the complainant is unsatisfied with the solution, then the Complainant can approach the Tier III: GRC Level. If the complainant is not satisfied with the solution provided at Tier 2 the grievance/complaint can be passed on to the Tier 3.

Tier 3: Grievance Redressal Cell: The 3rd Level will be the Grievance Redressal Cell (GRC) at PIU level. The cell would be headed by the Managing Director or his representative not below the rank of Director (Projects). The GRC will resolve the matter within a time period of 60 days.

Court of Law: If the grievance/ complaint is not resolved at GRC Level or the complainant is not satisfied with the solution provided by GRC, the person may approach Court of Law.

14. Budgeting and costing:

Budget of the proposed activities for the tribal development plan for Ghatdulmi and Jurgu villages of the tribal of GSS Chowka is Eight Lac Forty Six Thousand Seven Hundred Forty two only.

The details of the budget with activities unit cost and total amount are given in table number -8.

Table-8: Details budget for the Tribal People Development Plan (TPDP), GSS Chowka

Budget of TPDP, GSS Chowka				
SL No.	Proposed Activities	Units	Unit Cost (INR)	Total Amount (INR)
1	Installation and commissioning of solar streetlight (20Watt white LED based) (with GI pole, solar panel and control panel with accessories) on sacred grove such as Sarna, akhara, and other community places / institution.	20	32,557.00	6,51,140.00
2	Sanitation & Hygiene kit (Soap, Nail cutter, Toothbrush and Tongue Cleaner etc) including menstrual hygiene kit (Sanitary Napkin) among the tribal adolescents' girls.	122	1,000.00	122,000.00
3	Training and capacity building on electrical safety measures and health & hygiene.	4	20,000.00	80,000.00
	Subtotal (INR)			8,53,140.00
	Contingency cost @ of 2%			17,602.00
	Total Grand Amount (INR)			8,70,742.00
			Say	8,70,742.00

Total amount in words: Rupees Eight Lac Seventy Thousand Seven Hundred Forty two only.

.....

15. Annexure -

Annexure -01 (Community Meeting MOM and List of Identified Location for Installation Solar Light at Ghatdulmi Village.)

"जनजातीय विकास योजना" हेतु सामुदायिक परिषदी

आज दिनांक ०६/०७/२०२५ गांव "घाटदुल्मी" प्रवाण्ड
चाण्डल तालीला- सरायकेला खरसावा में ग्राम सभा का
आयोजन किया गया। जिसमें सम्मिलित वाडें सदस्य डॉर
ग्रामवासी लोगो ने भाग लिया डॉर साथ ही मेधाज
प्रातिमादीयो ने भी भाग लिया।

१) सर्वप्रथम सामुदायिक परिषदी का संचालन सत्यनारायण
दत्ता ने उपस्थित सभी ग्रामवासियों का आभिवन्दन करके किया।
वर्ल्ड बैंक के द्वारा पोषित तथा स्थापण्ड पावर सिस्टम
इम्पूवमेंट परियोजना की जानकारी दी।

२) वाडें सदस्य मालोयदेवी द्वारा बताया गया कि वर्तमान
में लगी हुई ओवर लार्ड बंद पड़ी हुई है।

३) सत्यनारायण दत्ता, मनोजकुमार खैर एवं रोहन कुमार मेधाज
कर्मचारियों द्वारा बताया गया कि प्रस्तावित परियोजना कार्य
के अन्तर्गत गांव में ओवर लार्ड की व्यवस्था की
जायेगी तथा किडोरी इवास्थ्य संबंधित वस्तुएँ जैसे
कि सेनेटरी नेक्कीन कीटकीपी व्यवस्था की जायेगी।

४) गांव में पानी की समुचित व्यवस्था नहीं है। ग्रामीणो
ने इसकी भी माँग उठाई है। जनप्रातिमादीयो द्वारा बताया
गया कि इसका आवेदन पेयजल कार्यलय विभाग को
भेज दिया गया है।

५) ग्रामवासियो द्वारा बताया गया कि ग्राम में भुण्डा
समाज की आवदी ज्यादा है। तथा बालिकाओं
का शिक्षा का हक इनतक रुक परास्ताक है।

उपस्थित ग्रामवासियों को धन्यवाद देते हुए
सुशील कुमार गौड़ ने आभारार्थी परिवर्ती का समापन
किया।

अभारमणी के नाम और हस्ताक्षर —

- | | |
|--|----------------------|
| 1) सागरमणी देवी | सागरमणी देवी |
| 2) देवमणि मिश्र | देवमणि मिश्र |
| 3) बुद्धदेव सिंह मुण्डा | बुद्धदेव सिंह मुण्डा |
| 4) राकेश्वर सिंह | राकेश्वर सिंह |
| 5) हेमलता सिंह मुण्डा | हेमलता सिंह मुण्डा |
| 6) मेनका देवी | मेनका देवी |
| 7) जलेश्वरी सिंह मुण्डा | जलेश्वरी सिंह मुण्डा |
| 8) सरस्वती मंडल | सरस्वती मंडल |
| 9) आशात्रानी मंडल | आशात्रानी मंडल |
| 10) चनाराम सिंह मुण्डा | चनाराम सिंह मुण्डा |
| 11) साफा देवी | साफा देवी |
| 12) रम्या काला देवी | रम्या काला देवी |
| 13) बनेश्वर सिंह मुण्डा (ग्राम प्रधान) | बनेश्वर सिंह मुण्डा |

14) पिंकी पातर

15) विनोति सिंह

16) आनंद सिंह पातर

17) सुब्रह्मण्य

18) मोतीलाल दास

19) मादनी देवी

Manoj Kumar Singh

Manoj Kumar (ESAP)

06/07/24

Satish Narayan Singh

Social Safeguard Associate

06/07/24

06/07/2024
ग्राम प्रधान
श्रीम राम चंद्रकांत

Manoj

सुमन

Charle Devaई सदस्य

Sushil Kr. Gupta

Technical Associate

ATCPL

06/07/24

Rohan Kumar

(Environment Safeguard Ass.)

Rohan Kumar

06/07/2024

Date _____
Page _____

"घाटदुलमी ग्राम सभा में सोलर लाइट लगाने हेतु निर्धारित स्थान"

- | | |
|--|---------|
| 1. पानी टंकी के पास | ⇒ 1 Nos |
| 2. हरि मंदिर के पास | ⇒ 1 Nos |
| 3. स्वमरेन्द्र मंडल (अगरनाथदास) मोड़ पे | ⇒ 1 Nos |
| 4. ग्राम पंचायत (चक्रवर्ती) पानी टंकी के पास | ⇒ 1 Nos |
| 5. सुपाय हावड़ा (कुआ के) घर के पास | ⇒ 1 Nos |
| 6. जाहेर स्थान (चौशिरा) के पास | ⇒ 1 Nos |
| 7. हाट मैदान के पास | ⇒ 1 Nos |
| 8. बनमाली लोहार के घर के सामने (पानी टंकी) | ⇒ 1 Nos |
| 9. स्वास्थ्य केन्द्र के सामने | ⇒ 1 Nos |
| 10. बृकुल सिंह के घर के पास (ग्राम मोड़) | ⇒ 1 Nos |

Total ⇒ 10 Nos

Annexure -02 (Community Meeting MOM and List of Identified Location for Installation Solar Light at Jurgu Village.)

"जनजातीय विकास योजना" हेतु सामुदायिक परिचर्चा

आज दिनांक 06/07/2024 ग्राम ~~जुगु~~ "जुगु" प्रखण्ड चाण्डोल, जिला मालवा, सरकारों ने ग्राम सभ का आयोजन किया गया। जिसमें ~~सभी~~ ग्रामवासियों ने भाग लिया। डॉ. आर. बी. राय ने अध्यक्षीय भाषण दे कर ग्राम सभ में ~~परी~~ भाग लिया।

⇒ सर्वप्रथम सामुदायिक परिचर्चा का संचालन सत्यनारायण दत्ता ने सहायित सभी ग्रामवासियों का आमंत्रण किया। वेल्ड बैंक के द्वारा प्रेषित तथा आरक्षण पावर सिस्टम इंफ्रामेंट परियोजना की जानकारी दी।

⇒ ग्राम प्रधान प्रभाति महतो द्वारा बताया गया कि वर्तमान में जो भी सोलर लाइट लगी हुई है। उसमें अधिकांश बंद पड़ी हुई है।

⇒ सत्यनारायण दत्ता, मनोज कुमार सिंह तथा शुशिल कुमार गौतम मैथिल कर्मचारियों द्वारा बताया गया कि प्रस्तावित परियोजना कार्य के अंतर्गत गाँव में सोलर लाइट की व्यवस्था की जाएगी तथा किशोरियों को सेनेटरी नैपकिन कित की भी वितरण व्यवस्था की जाएगी।

⇒ ग्रामवासियों द्वारा बताया गया कि ग्राम में संख्या और महतो समुदाय के लोग ज्यादा संख्या में निवास करते हैं।

⇒ उपस्थित ग्रामवासियों को धन्यवाद देते हुए रोहन कुमार सामुदायिक परिचर्चा का समापन किया।

⇒ उपस्थित ग्रामवासियों के नाम एवं हस्ताक्षर : —

1. प्रमिला महतो
2. रेणुका महतो
3. सावित्री देवी -
4. शान्ति देवी -
5. जोगना देवी - 2 भुना देवी
6. कलवती महतो - कलवती महतो
7. निलमणी महतो - नीलमणी महतो
8. लक्ष्मी देवी - लक्ष्मी देवी
9. सोमवती देवी -
10. पुष्पा मांझी - पुष्पा महतो
11. लक्ष्मी महतो -
12. बालनी देवी -
13. लक्ष्मी -
14. गंगारानी - गंगारानी महतो
15. दुरपती महतो -
16. सोमवती मांझी -
17. गुरुवती देवी - गुरुवती देवी
18. पुष्पी देवी - पुष्पी देवी
19. प्रमिला महतो - प्रमिला महतो
20. उर्मिला देवी -
21. सुप्रभा मांझी -
22. सरस्वती -
23. पांडरी देवी - पेन्डरी देवी
24. संगीता महतो - संगीता महतो
25. समाली महतो - सामाली महतो
26. उपरानी महतो - उपरानी महतो
27. श्रीमति महतो - श्रीमती महतो
28. रीता मांझी - Ritu Maahli
29. मंजू मांझी - मंजू मांझी
30. बादि मांझी - बादि मांझी
31. पार्वती महतो -
32. राधाकान्त महतो - राधाकान्त महतो
33. अनिल चन्द्र महतो - अनिल चन्द्र महतो
34. मनसा राम मांझी - मनसा राम मांझी

११३३७५३९५

32. विरले-स माइती
33. विरले-स माइती
39. सुखपट्ट माइती
40. मरणा माइती
41. विरले माइती
42. मरणा माइती
43. विरले माइती
44. सुखपट्ट माइती
45. विरले माइती
46. सुखपट्ट माइती
47. विरले माइती
48. सुखपट्ट माइती
49. विरले माइती
50. सुखपट्ट माइती
51. सुखपट्ट माइती
52. सुखपट्ट माइती
53. सुखपट्ट माइती

Handwritten signature
Handi

Handwritten signature
Gauri

23-04-2024

Handwritten signature
Sunita Nayala

Handwritten signature
Sunita Nayala

82355 058 29
(82355 058 29)
सुरक्षा, सारायकेला-खरसावी

Sushil K. Gauri
Technical Associate
MTCN
10/07/24

Satya Narayan Dutt
Social Safeguard Associate
06/03/2024

Mang Kumar Singh (CSA)
08/07/24

" जुलु ग्रामसभा में सोलर लाइट लगाने हेतु निर्धारित स्थान "

1)	हरि मंदिर (पुजा स्थल)	⇒ 1 मंड
2)	आंगनवाड़ी केंद्र	⇒ 1 मंड
3)	प्राथमिक विद्यालय	⇒ 1 मंड
4)	स्वच्छता भवन (कला केंद्र)	⇒ 1 मंड
5)	श्रीदेवनाथ मांझी के घर के पास	⇒ 1 मंड
6)	डिरो मांझी के घर के पास	⇒ 1 मंड
7)	श्रीपति के घर के पास	⇒ 1 मंड
8)	मलहान मांझी के घर के पास	⇒ 1 मंड
9)	बिंदू मांझी के घर के पास	⇒ 1 मंड
10)	भनसा मंदिर (पुजास्थल)	⇒ 1 मंड

Total ⇒ 10 मंड